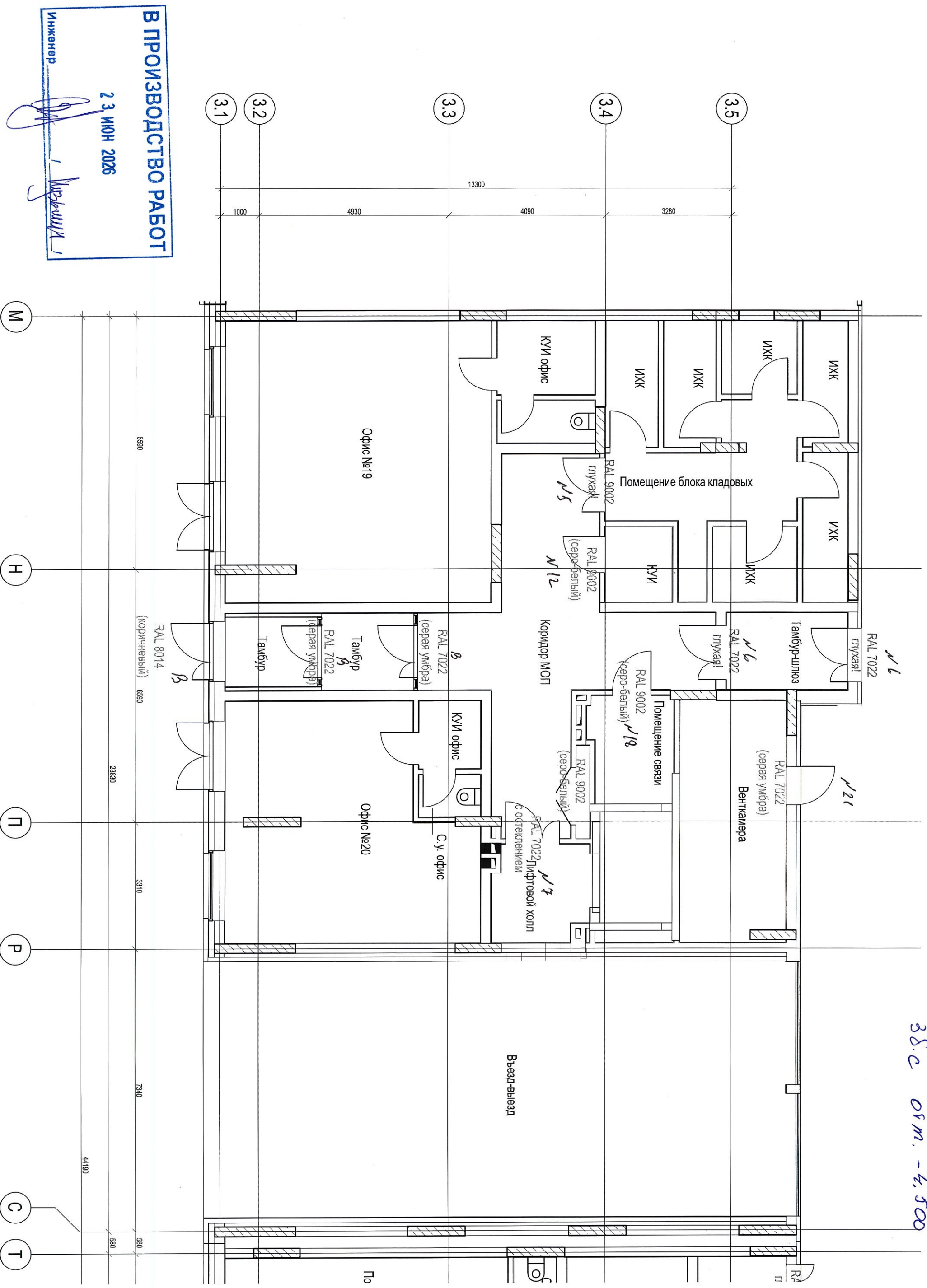
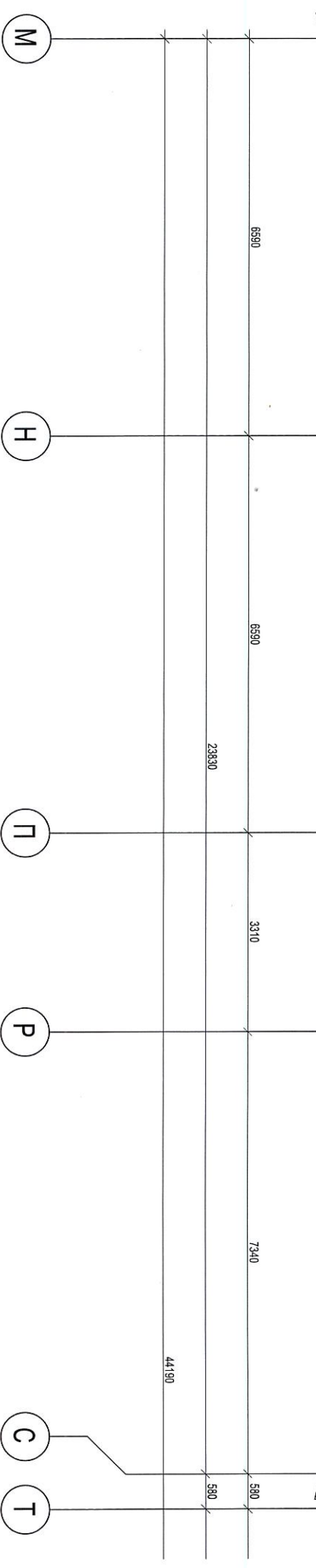


38.c OSM, -4,500



The diagram shows a horizontal line representing a structure of total length 16,490 units. The structure is divided into six segments, labeled 3.1 through 3.6. The lengths of the segments are: 3.1 (1000 units), 3.2 (4930 units), 3.3 (4090 units), 3.4 (3280 units), 3.5 (3190 units), and 3.6 (16490 units). The segments are arranged in a sequence from left to right, with segment 3.6 being the longest and segment 3.1 being the shortest.



Инженер И.И.И. / И.И.И.

J. J. J.



Architectural floor plan of a residential building with 16 units. The plan shows a central corridor (Коридор МОП) with stairs (Л.К.) and elevators (РАЛ 7022, РАЛ 1013). Units are arranged in two rows, each with a living room (Жилая комната), kitchen-dining area (Кухня-столовая), and balcony (Балкон). Units are labeled with apartment numbers (e.g., 123, 1013, 7022) and room types (e.g., Кв., Прихожая, С.у.). Dimensions are provided for the overall building and individual units.

Overall dimensions: 6590 (width) x 16490 (length).

Unit dimensions (width x length):

- Unit 123: 3190 x 4090
- Unit 1013: 3280 x 4090
- Unit 7022: 4930 x 4090
- Unit 1014: 4930 x 4090
- Unit 1015: 4930 x 4090
- Unit 1016: 4930 x 4090
- Unit 1017: 4930 x 4090
- Unit 1018: 4930 x 4090
- Unit 1019: 4930 x 4090
- Unit 1020: 4930 x 4090
- Unit 1021: 4930 x 4090
- Unit 1022: 4930 x 4090
- Unit 1023: 4930 x 4090
- Unit 1024: 4930 x 4090
- Unit 1025: 4930 x 4090
- Unit 1026: 4930 x 4090

Room labels: Жилая комната, Кухня-столовая, Прихожая, С.у., Балкон, Коридор, Л.К., РАЛ 7022, РАЛ 1013, Кв.\*.

Scale: 1:100.

23 ИЮН 2022

В ПРОИЗВОДСТВЕ

23 | ИЮН 2026

Инженер

M

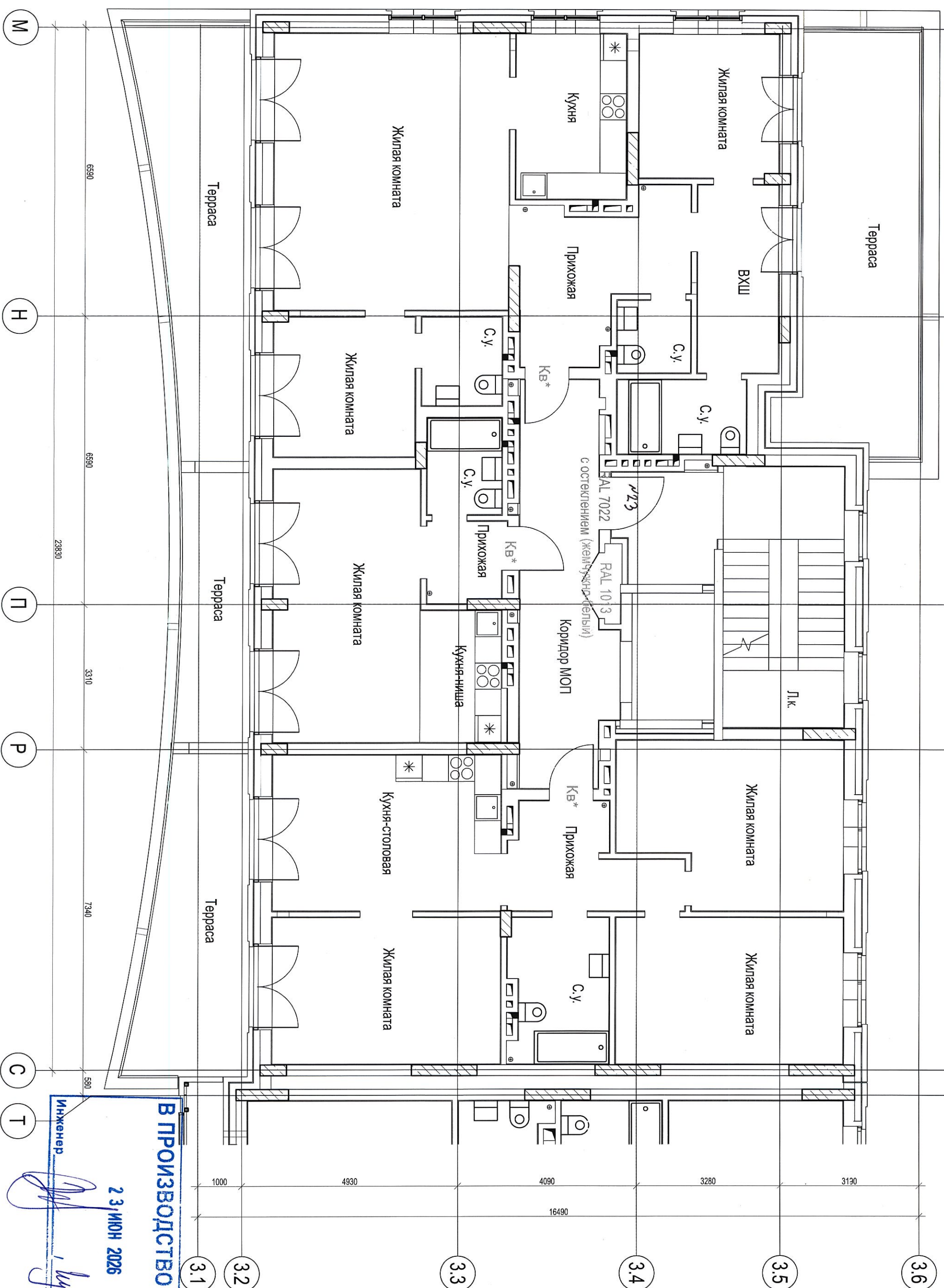
工

1

P

9





В ПРОИЗВОДСТВО РАБОТ

23/ИЮН 2026

**Инженер**

14/03/2014